

# SEMCO NEWS

Official Member Newsletter

Your Touchstone Energy® Cooperative   
The power of human connections®

May 2023

## Sumter EMC Board Appoints Leon Williams as At-Large Director

In compliance with the Sumter EMC Bylaws, the Sumter EMC Board of Directors has appointed Leon Williams to fill the at-large directorate seat left vacant by the death of Lawrence Williams. Mr. Williams was appointed effective March 2, 2023.

Leon Williams was born and raised in Marion County on a farm outside Buena Vista. He proudly served his country in the U.S. Army, where he trained at Fort Benning and spent time overseas while stationed in Germany. Upon his return to the United States, he married his high school sweetheart, Priscilla.

He and Priscilla have been married for 45 years, the same amount of time they have been Members of Sumter EMC. Their family includes two children, Dr. Leon Williams Jr. and Kelcey Williams; daughter-in-law, Aqura; granddaughter, Vyne; and grandson, Leon Williams III.

Williams has spent the bulk of his life serving others.



Leon Williams

He has served on the Marion County Board of Education for 20 years and retired from Chattahoochee County Schools after working there for 11 years. Whether in the military, on the school board, as an educator, or from the pulpit, he takes pride in working well with people. Williams has been a pastor for 30 years and is passionate about building up the churches where he serves. He is the pastor at Fairview CME Church in Fort Valley.

Williams says he was delighted to learn of his appointment to the Board, as he always felt called to be in a position of this caliber. His message to the Members of Sumter EMC is that they

can always count on him to make decisions that are best for them, the co-op, and the community.

“We welcome Mr. Williams to the Sumter EMC Board of Directors. We look forward to working with him and appreciate his willingness to serve our Members,” says Cecil Myers, MD, Chairman of the Board of Sumter EMC.

### Holiday Office Closing

The offices of Sumter EMC will be closed Monday,  
May 29, 2023, in observance of Memorial Day.

Dispatcher on duty 24/7.

Report emergencies by calling (800) 342-6978.



# Capital Credits Assignments

Sumter EMC operates as a not-for-profit electric cooperative owned by the Members it serves. Revenues remaining after all expenses are paid are called margins, which are calculated yearly for each consumer and assigned to Member accounts as capital credits.

For several years before refunding capital credits to Members, Sumter EMC uses such funds to expand distribution facilities and general plant.

Using capital credits to construct distribution lines and substations reduces the cooperative's need to borrow funds and lowers interest expense.

Margins assigned to Sumter EMC by associated organizations are assigned to Members in the same way as operating margins. These organizations include Oglethorpe Power Corp. (OPC)\*, Georgia Rural Electric Service Corp., National Rural Utilities Cooperative Finance Corp., CoBank, Meridian

Cooperative, Federated Rural Electric Insurance Exchange, and National Rural Telecommunications Corp.

Margins assigned to Members from Sumter EMC operations and all associated organizations (excluding OPC) equal 1.344% of 2022 revenue. Margins assigned from OPC equal 1.735% of total revenue for 2022.

Examples of how your capital credits assignment is calculated are shown in the table on this page. To compute individual assignments, multiply the percentage figures times the sum of your 2022 power bills, excluding sales tax and other charges.

If you have any questions about your capital credits assignments, call us today at (229) 924-8041 or (800) 342-6978.

*\*Oglethorpe Power Corp. margins include those of OPC and all other sources of power supply and transmission services.*

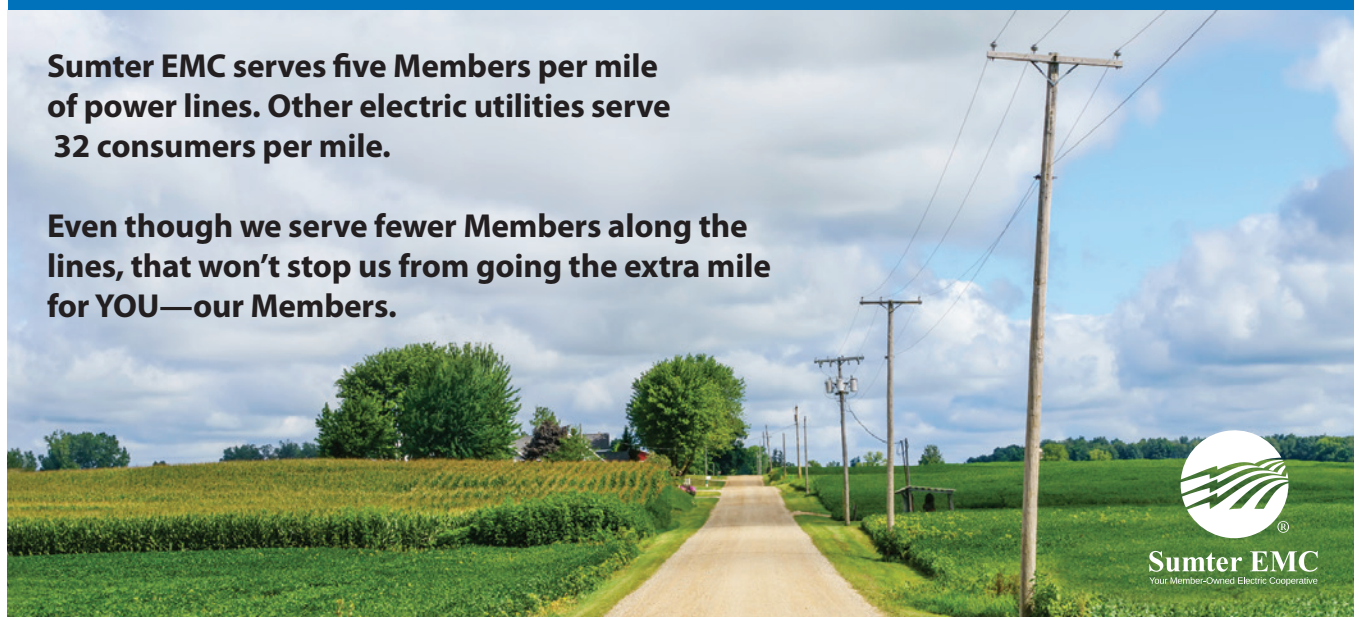
## CAPITAL CREDITS ASSIGNED FOR 2022

%	<i>If your total bills were:</i>	\$ 500	\$ 1,000
1.344	Capital Credits assigned from Sumter EMC margins were:	\$ 6.72	\$ 13.44
1.735	Capital credits assigned by Oglethorpe Power Corp. were:	\$ 8.68	\$ 17.35

## Sumter EMC Goes the Extra Mile

Sumter EMC serves five Members per mile of power lines. Other electric utilities serve 32 consumers per mile.

Even though we serve fewer Members along the lines, that won't stop us from going the extra mile for YOU—our Members.



Sumter Electric Membership Corporation is an equal opportunity provider and employer.

# A Note From Sumter EMC

## President/CEO Rene Smith



Rene Smith, President/CEO

### Take time to plug into safety

This month, I want to reflect on the importance of safety. May is Electrical Safety Month, and Sumter EMC will be sharing safety tips and reminders throughout the month to help raise awareness about the dangers of electricity on our website and social media. We all depend on electricity to power our lives, but accidents can happen when electricity is misused.

### Our responsibility to you

Sumter EMC's concern for safety extends beyond our employees. We care deeply about the safety of our Members, and this month we encourage you to plug into safety. According to the Electrical Safety Foundation International, thousands of people in the U.S. are critically injured and electrocuted due to electrical fires, accidents, and electrocution in their homes each year.

To promote safety education in our local communities, we participate in safety demonstrations at local schools and community events. In addition, we frequently provide electrical safety content in *Georgia Magazine*. Finally, we encourage the public to contact us if they see a downed power line or any other dangerous electrical situation. We strive to provide our communities with safe, reliable, and affordable electricity, and to serve as your trusted energy adviser now and well into the future.

### Our responsibility to employees

It is no accident that safety is a top priority at Sumter EMC. We are committed to a culture of safety that is integral to our daily operations. Sumter EMC is part of the Rural Electric Safety Achievement Program (RESAP), which follows specific guidelines and protocols for electrical safety that are considered leading practices.

Our lineworkers must always wear personal protective equipment when on the job. This includes unique, fire-resistant clothing that will self-extinguish, limiting potential injuries from burns and sparks. Insulated and rubber gloves are worn in tandem to protect from electrical shock. Our safety team regularly discusses essential safety issues about work within the building and out in the field.

As President/CEO of Sumter EMC, I am responsible for raising awareness about the importance of electrical safety. So, take a moment to plug into safety. Please visit [www.sumteremc.com/safety-tips](http://www.sumteremc.com/safety-tips) for tips about how to keep you and your loved ones safe.

## Energy Efficiency Tip of the Month

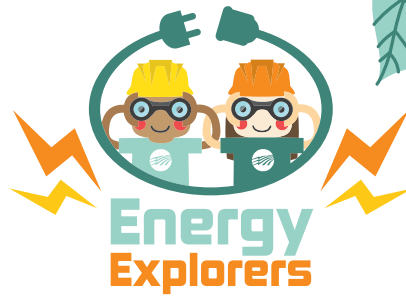


The location of your thermostat can impact your HVAC system's ability to maintain an ideal indoor temperature. For maximum accuracy, thermostats should be placed in the center of the home, away from air vents, plumbing pipes and exterior doors.

Avoid placing items like lamps and televisions near your thermostat, which can cause the HVAC to run longer than necessary. Avoid installing thermostats in rooms that tend to feel warmer or colder than the rest of the home. Do not place furniture in front of the thermostat, which can block air flow and result in inaccurate readings.







# ELECTRICAL SAFETY QUIZ

May is National Electrical Safety Month! Take this quiz to test your safety skills. Check your answers in the key below.

1. It's safe to plug in several devices to one electrical outlet as long as you use a power strip.  
A. True B. False
2. Smoke alarms should be tested \_\_\_\_\_ .  
A. Every month B. Every other month C. Every six months
3. Extension cords are safe to use year-round if the cord is not frayed or damaged.  
A. True B. False
4. When unplugging a device from an electrical outlet, always hold the \_\_\_\_\_ while unplugging.  
A. Cord B. Plug C. Device
5. It's never safe to play near power lines, but it's OK to play near pad-mounted transformers (those big green boxes you see in neighborhoods).  
A. True B. False
6. Where is the most dangerous place to use electricity?  
A. Near other electrical equipment B. Outdoors C. Near water

Answer Key: 1.B 2.A 3.B 4.B 5.B 6.C